

Statistical Section



*Washoe County
School District*

Comprehensive
Annual
Financial Report

Statistical Section

This section presents detailed information as a context for understanding what the information in the financial statements, note disclosures and required supplementary information says about the District's overall financial health.

	<u>Tables</u>
Financial Trends Provides trend information to assist in understanding how the District's financial performance and well-being have changed over time.	1.1 – 1.5
Revenue Capacity Information to assist in understanding the District's most significant local revenue sources, property taxes (ad valorem).	2.1 – 2.5
Debt Capacity Information assessing the affordability of the District's current levels of outstanding debt and the ability to issue additional debt in the future.	3.1 – 3.3
Demographic and Economic Information Indicators to assist in understanding the environment within which the District's financial activities take place.	4.1 – 4.2
Operating Information Service and infrastructure data to assist in understanding how the information in the District's financial report relates to the services and activities provided.	5.1 – 5.4

Sources: Unless otherwise noted, the information in these tables is derived from the Comprehensive Financial Report for the relevant year.

**Washoe County School District
Net Assets by Component
Last Ten Fiscal Years
(accrual basis of accounting)**

	Fiscal Year Ended June 30, 2011			
	2002	2003	2004	2005
Governmental activities				
Invested in capital assets, net of related debt	\$ 99,715,396	\$ 103,275,042	\$ 116,714,931	\$ 127,695,444
Restricted	36,878,994	48,612,148	42,954,923	51,789,892
Unrestricted	(12,198,137)	(8,263,575)	6,064,672	21,650,755
Total governmental activities net assets	\$ 124,396,253	\$ 143,623,615	\$ 165,734,526	\$ 201,136,091
Business-type activities				
Invested in capital assets	\$ -	\$ -	\$ -	\$ -
Unrestricted	-	-	-	-
Total business-type activities net assets	\$ -	\$ -	\$ -	\$ -
Primary government				
Invested in capital assets, net of related debt	\$ 99,715,396	\$ 103,275,042	\$ 116,714,931	\$ 127,695,444
Restricted	36,878,994	48,612,148	42,954,923	51,789,892
Unrestricted	(12,198,137)	(8,263,575)	6,064,672	21,650,755
Total primary government net assets	\$ 124,396,253	\$ 143,623,615	\$ 165,734,526	\$ 201,136,091

Source: Washoe County School District Business Office

Table 1.1

	<u>2006</u>	<u>2007</u>	<u>2008</u>	<u>2009</u>	<u>2010</u>	<u>2011</u>
\$	136,809,928	\$ 146,148,691	\$ 162,631,890	\$ 174,502,710	\$ 172,508,687	\$ 210,091,401
	60,204,389	98,216,742	114,710,349	130,837,182	138,439,390	108,417,840
	35,443,408	28,324,447	38,226,905	43,165,344	56,704,911	56,692,790
\$	<u>232,457,725</u>	<u>272,689,880</u>	<u>315,569,144</u>	<u>348,505,236</u>	<u>367,652,988</u>	<u>375,202,031</u>
\$	542,397	\$ 503,245	\$ 404,802	\$ 396,799	\$ 633,724	\$ 551,185
	3,156,740	2,667,745	2,713,850	3,304,626	3,693,147	3,387,368
\$	<u>3,699,137</u>	<u>3,170,990</u>	<u>3,118,652</u>	<u>3,701,425</u>	<u>4,326,871</u>	<u>3,938,553</u>
\$	137,352,325	\$ 146,651,936	\$ 163,036,692	\$ 174,899,509	\$ 173,142,411	\$ 210,642,586
	60,204,389	98,216,742	128,996,995	130,837,182	138,439,390	108,417,840
	38,600,148	30,992,192	26,654,109	46,469,970	60,398,058	60,080,158
\$	<u>236,156,862</u>	<u>275,860,870</u>	<u>318,687,796</u>	<u>352,206,661</u>	<u>371,979,859</u>	<u>379,140,584</u>

Washoe County School District
Changes in Net Assets
Last Ten Fiscal Years
(accrual basis of accounting)

	Fiscal Year Ended June 30,			
	2002	2003	2004	2005
Expenses				
Governmental activities				
Instruction				
Regular instruction	\$ 180,196,628	\$ 184,993,866	\$ 194,831,967	\$ 206,911,454
Special instruction	30,070,560	32,001,726	34,870,606	37,356,574
Vocational instruction	6,593,175	6,227,423	7,299,838	7,310,262
Other instruction	4,767,956	5,009,228	5,263,695	5,299,761
Adult education instruction	-	-	-	-
Community services instruction	-	-	-	-
Co-curricular instruction	-	-	-	-
Total instruction	<u>221,628,319</u>	<u>228,232,243</u>	<u>242,266,106</u>	<u>256,878,051</u>
Support services				
Instruction	-	-	-	-
Student support	17,903,382	18,448,225	21,195,379	25,372,276
Instructional staff support	13,329,522	15,336,683	15,536,807	15,787,724
General administration	5,542,329	6,077,638	6,261,080	6,632,435
School administration	18,739,572	19,965,103	21,622,401	22,674,418
Central services	8,699,048	9,105,838	10,653,433	13,448,660
Operation and maintenance	32,528,440	33,658,260	34,840,160	36,854,305
Student transportation	12,376,312	13,343,831	13,507,932	15,126,041
Other support	179,924	336,498	199,114	144,341
Nutrition services	12,554,171	13,373,888	13,853,617	14,621,816
Community service operations	-	-	-	-
Facilities	17,369,591	13,737,063	17,294,160	17,700,847
Interest on long-term debt	22,161,971	17,121,442	19,132,944	18,955,978
Amortization of issuance costs on debt	-	459,603	547,483	715,201
Total support services	<u>161,384,262</u>	<u>160,964,072</u>	<u>174,644,510</u>	<u>188,034,042</u>
Unallocated refund of Incline Village property taxes	-	-	-	-
Total governmental activities	<u>383,012,581</u>	<u>389,196,315</u>	<u>416,910,616</u>	<u>444,912,093</u>
Business-type activities				
Nutrition services	-	-	-	-
Total school district	<u>\$ 383,012,581</u>	<u>\$ 389,196,315</u>	<u>\$ 416,910,616</u>	<u>\$ 444,912,093</u>

Table 1.2

	2006	2007	2008	2009	2010	2011
\$	219,283,856	\$ 237,531,977	\$ 249,002,229	\$ 255,214,934	\$ 215,922,516	\$ 200,910,500
	40,361,274	43,558,232	46,242,040	51,095,105	67,093,235	66,119,459
	7,978,977	6,859,471	7,025,834	7,408,013	8,289,052	8,192,784
	4,908,141	5,983,182	5,883,354	6,478,515	50,408,402	62,794,001
	-	-	-	-	1,600,284	1,951,707
	-	-	-	-	856,533	757,579
	-	-	-	-	3,422,601	3,447,205
	<u>272,532,248</u>	<u>293,932,862</u>	<u>308,153,457</u>	<u>320,196,567</u>	<u>347,592,623</u>	<u>344,173,235</u>
	-	-	-	-	293,830	339,215
	27,775,369	28,176,004	32,412,506	34,798,496	25,696,965	24,832,719
	18,234,230	21,037,319	24,081,071	24,778,616	12,090,308	12,117,988
	7,195,661	8,181,454	9,670,750	10,209,601	5,652,249	5,267,326
	24,734,884	26,058,599	29,873,872	31,301,763	31,075,074	29,682,847
	14,374,653	15,077,494	16,161,147	18,357,475	23,144,740	20,817,611
	42,085,877	45,212,457	47,252,870	50,175,497	48,294,122	45,840,239
	16,311,285	17,172,992	21,834,104	21,974,038	15,454,876	15,173,027
	29,117	231,449	238,197	313,763	11,137	2,079,234
	-	-	-	-	-	-
	-	-	271,759	231,969	402,769	388,674
	16,272,050	25,817,244	22,954,240	26,315,951	31,261,928	30,214,091
	20,921,135	20,107,992	22,641,916	24,090,170	25,395,984	24,139,763
	804,603	1,114,139	1,118,092	1,151,957	1,093,095	1,364,618
	<u>188,738,864</u>	<u>208,187,143</u>	<u>228,510,524</u>	<u>243,699,296</u>	<u>219,867,077</u>	<u>212,257,352</u>
	-	-	-	-	-	15,000,000
	<u>461,271,112</u>	<u>502,120,005</u>	<u>536,663,981</u>	<u>563,895,863</u>	<u>567,459,700</u>	<u>571,430,587</u>
	<u>15,603,133</u>	<u>16,973,722</u>	<u>18,028,995</u>	<u>17,334,964</u>	<u>18,643,773</u>	<u>18,937,409</u>
\$	<u><u>476,874,245</u></u>	<u><u>519,093,727</u></u>	<u><u>554,692,976</u></u>	<u><u>581,230,827</u></u>	<u><u>586,103,473</u></u>	<u><u>590,367,996</u></u>

(CONTINUED)

**Washoe County School District
Changes in Net Assets
Last Ten Fiscal Years
(accrual basis of accounting)**

	Fiscal Year Ended June 30,			
	2002	2003	2004	2005
Program revenues				
Governmental activities				
Charges for services				
Regular instruction	\$ 221,483	\$ 231,908	\$ 158,452	\$ 172,569
Other instruction	934,942	1,104,753	985,198	1,175,060
Instructional staff support	205,004	240,161	236,461	238,541
General administration	-	-	-	-
School administration	142,112	145,547	153,168	149,688
Nutrition services	6,175,534	6,154,667	6,287,680	6,578,912
Community services instruction	-	-	-	-
Operating grants and contributions	68,176,805	71,314,386	75,489,897	86,721,909
Total governmental activities program revenues	<u>75,855,880</u>	<u>79,191,422</u>	<u>83,310,856</u>	<u>95,036,679</u>
Business-type activities				
Charges for services	-	-	-	-
Operating grants and contributions	-	-	-	-
Total business-type activities revenues	-	-	-	-
Total primary government revenues	<u>\$ 75,855,880</u>	<u>\$ 79,191,422</u>	<u>\$ 83,310,856</u>	<u>\$ 95,036,679</u>
Net (expense)/revenue				
Governmental activities	\$ (307,156,701)	\$ (310,004,893)	\$ (333,599,760)	\$ (349,875,414)
Business-type activities	-	-	-	-
Total primary government net expense	<u>\$ (307,156,701)</u>	<u>\$ (310,004,893)</u>	<u>\$ (333,599,760)</u>	<u>\$ (349,875,414)</u>
General revenues and other changes in net assets				
Governmental activities				
Taxes				
Property taxes	\$ 102,617,739	\$ 109,768,083	\$ 117,819,676	\$ 126,044,207
Local school support taxes	112,258,067	116,959,363	128,565,040	145,056,434
Government service taxes	13,015,491	14,230,955	15,817,100	17,260,710
Other local sources	3,324,087	4,406,690	4,476,050	5,297,089
Unrestricted investment earnings	7,363,521	4,912,745	1,672,999	5,789,233
State aid not restricted to specific purposes	75,088,119	78,721,232	87,154,547	85,542,351
State aid special appropriations	-	-	-	-
ARRA - State fiscal stabilization	-	-	-	-
Franchise taxes	230,353	233,187	205,259	286,955
State portion of Incline Village property taxes	-	-	-	-
Total governmental activities	<u>313,897,377</u>	<u>329,232,255</u>	<u>355,710,671</u>	<u>385,276,979</u>
Business-type activities				
Transfers	-	-	-	-
Total primary government revenues	<u>\$ 313,897,377</u>	<u>\$ 329,232,255</u>	<u>\$ 355,710,671</u>	<u>\$ 385,276,979</u>
Change in net assets				
Governmental activities	\$ 6,740,676	\$ 19,227,362	\$ 22,110,911	\$ 35,401,565
Business-type activities	-	-	-	-
Total primary government	<u>\$ 6,740,676</u>	<u>\$ 19,227,362</u>	<u>\$ 22,110,911</u>	<u>\$ 35,401,565</u>

Source: Washoe County School District Business Office

Table 1.2

	2006	2007	2008	2009	2010	2011
\$	263,077	\$ 290,232	\$ -	\$ -	\$ -	\$ -
	976,922	1,193,347	1,283,690	1,038,137	544,918	1,410,373
	425,096	580,332	520,432	390,408	-	-
	-	-	-	-	389,397	-
	140,864	152,068	162,735	162,438	-	-
	-	-	-	-	-	-
	-	-	215,864	205,767	335,279	433,266
	86,523,775	105,380,311	98,800,969	105,300,822	107,415,696	115,193,329
	<u>88,329,734</u>	<u>107,596,290</u>	<u>100,983,690</u>	<u>107,097,572</u>	<u>108,685,290</u>	<u>117,036,968</u>
	6,945,811	6,870,401	6,738,145	5,968,280	5,381,119	4,933,054
	9,313,397	9,575,174	10,988,512	11,949,457	13,562,465	13,616,037
	16,259,208	16,445,575	17,726,657	17,917,737	18,943,584	18,549,091
\$	<u>104,588,942</u>	<u>124,041,865</u>	<u>118,710,347</u>	<u>125,015,309</u>	<u>127,628,874</u>	<u>135,586,059</u>
\$	(372,941,378)	\$ (394,523,715)	\$ (435,680,291)	\$ (456,798,291)	\$ (458,774,410)	\$ (454,393,619)
	656,075	(528,147)	(302,338)	582,773	299,811	(388,318)
\$	<u>(372,285,303)</u>	<u>(395,051,862)</u>	<u>(435,982,629)</u>	<u>(456,215,518)</u>	<u>(458,474,599)</u>	<u>(454,781,937)</u>
\$	136,445,205	\$ 150,413,632	\$ 161,108,715	\$ 170,321,918	\$ 167,348,704	\$ 153,694,307
	161,027,372	156,893,557	153,328,703	120,369,201	127,099,100	128,788,689
	18,277,143	18,677,186	18,297,902	16,643,570	15,321,249	14,560,297
	6,610,442	6,040,636	6,502,756	7,608,186	6,476,613	10,587,927
	7,304,748	10,277,185	13,687,934	9,476,546	4,954,850	6,630,982
	77,280,007	92,147,678	125,171,400	143,080,662	156,389,169	143,954,130
	-	-	-	-	-	527,290
	-	-	-	21,869,831	-	-
	361,157	305,996	462,145	364,469	332,477	365,707
	-	-	-	-	-	2,833,333
	<u>407,306,074</u>	<u>434,755,870</u>	<u>478,559,555</u>	<u>489,734,383</u>	<u>477,922,162</u>	<u>461,942,662</u>
	-	-	250,000	-	325,635	-
\$	<u>407,306,074</u>	<u>434,755,870</u>	<u>478,809,555</u>	<u>489,734,383</u>	<u>478,247,797</u>	<u>461,942,662</u>
\$	34,364,696	\$ 40,232,155	\$ 42,879,264	\$ 32,936,092	\$ 19,147,752	\$ 7,549,043
	656,075	(528,147)	(52,338)	582,773	625,446	(388,318)
\$	<u>35,020,771</u>	<u>39,704,008</u>	<u>42,826,926</u>	<u>33,518,865</u>	<u>19,773,198</u>	<u>7,160,725</u>

**Washoe County School District
Fund Balances of Governmental Funds
Last Ten Fiscal Years
(modified accrual basis of accounting)**

	Fiscal Year Ended June 30,			
	2002	2003	2004	2005
General fund				
Reserved	\$ 2,917,834	\$ 2,332,785	\$ 6,310,332	\$ 1,955,639
Unreserved	2,515,484	8,223,279	12,600,229	22,681,321
Non-spendable	-	-	-	-
Assigned	-	-	-	-
Total general fund	\$ 5,433,318	\$ 10,556,064	\$ 18,910,561	\$ 24,636,960
All other governmental funds				
Reserved	\$ 75,152,558	\$ 54,937,381	\$ 46,972,103	\$ 76,987,832
Unreserved reported in				
Special revenue funds	1,294,478	1,714,981	4,475,704	7,022,230
Capital projects funds	28,562,722	34,344,217	63,947,633	93,283,119
Restricted	-	-	-	-
Total all other governmental funds	\$ 105,009,758	\$ 90,996,579	\$ 115,395,440	\$ 177,293,181
Total governmental funds	\$ 110,443,076	\$ 101,552,643	\$ 134,306,001	\$ 201,930,141

Fluctuations in all other governmental fund balance reserved and unreserved amounts primarily reflect financing, construction in progress and completion of large capital projects.

* The format for reporting Fund Balances changed per GASB 54 for Fiscal Year Ended June 30, 2011.

Source: Washoe County School District Business Office

Table 1.3

<u>2006</u>	<u>2007</u>	<u>2008</u>	<u>2009</u>	<u>2010</u>	<u>2011 *</u>
\$ 2,991,296	\$ 2,896,595	\$ 1,711,496	\$ 3,624,998	\$ 2,822,180	\$ -
28,909,898	34,864,420	46,515,636	53,180,043	61,710,700	-
-	-	-	-	-	1,108,844
-	-	-	-	-	70,548,331
<u>\$ 31,901,194</u>	<u>\$ 37,761,015</u>	<u>\$ 48,227,132</u>	<u>\$ 56,805,041</u>	<u>\$ 64,532,880</u>	<u>\$ 71,657,175</u>
\$ 67,813,194	\$ 66,760,281	\$ 121,979,693	\$ 103,186,619	\$ 90,860,701	\$ -
9,953,987	14,959,439	14,286,646	11,089,587	4,394,767	-
54,227,357	109,248,946	82,927,717	77,107,155	86,521,977	-
-	-	-	-	-	134,001,940
<u>\$ 131,994,538</u>	<u>\$ 190,968,666</u>	<u>\$ 219,194,056</u>	<u>\$ 191,383,361</u>	<u>\$ 181,777,445</u>	<u>\$ 134,001,940</u>
<u>\$ 163,895,732</u>	<u>\$ 228,729,681</u>	<u>\$ 267,421,188</u>	<u>\$ 248,188,402</u>	<u>\$ 246,310,325</u>	<u>\$ 205,659,115</u>

Washoe County School District
Changes in Fund Balances of Governmental Funds
Last Ten Fiscal Years
(modified accrual basis of accounting)

	Fiscal Year Ended June 30,			
	2002	2003	2004	2005
Revenues				
Local sources	\$ 245,902,508	\$ 258,706,169	\$ 277,758,436	\$ 309,321,004
State sources	115,513,083	117,830,448	125,302,983	129,972,727
Federal sources	26,831,858	31,007,808	35,131,347	40,324,344
Other sources	1,418,410	1,258,824	2,010	37,345
Total revenues	389,665,859	408,803,249	438,194,776	479,655,420
Expenditures				
Current				
Regular programs	179,366,818	183,529,233	197,968,562	208,690,609
Special programs	29,938,441	31,741,223	34,842,293	37,844,397
Vocational programs	6,564,020	6,169,534	7,293,902	7,405,722
Other instructional programs	2,930,266	2,776,041	2,928,092	3,114,088
Adult education programs	1,090,042	1,420,058	1,369,039	1,327,449
Food service programs	12,576,917	13,507,772	14,009,635	14,838,211
Community services programs	701,908	762,200	813,387	793,625
Co-curricular programs	-	-	-	-
Undistributed expenditures				
Instruction	-	-	-	-
Student support	17,842,362	18,343,762	21,396,488	25,956,643
Instructional staff support	13,268,685	15,217,607	15,593,094	16,027,761
General administration	5,502,641	6,027,809	6,240,901	6,743,167
School administration	18,669,539	19,791,036	21,604,444	22,993,010
Central services	8,662,595	9,069,891	10,753,118	14,168,104
Operation and maintenance	35,762,338	33,181,675	34,592,121	37,737,291
Student transportation	12,142,202	12,635,127	12,717,685	19,047,410
Other support	167,506	332,299	189,113	132,307
Community service operations	-	-	-	-
Capital projects	5,195,672	3,430,599	2,249,578	799,093
Capital outlay				
Capital outlay	40,212,360	53,318,529	36,588,795	18,261,546
Debt service				
Principal	20,028,992	22,144,229	23,392,727	25,720,391
Interest	19,892,555	16,422,095	19,474,379	19,156,006
Bond issuance costs	-	898,612	693,292	547,149
Other	1,105,185	-	9,846	13,738
Total expenditures	431,621,044	450,719,331	464,720,491	481,317,717
Excess (deficiency) of revenues over expenditures	(41,955,185)	(41,916,082)	(26,525,715)	(1,662,297)
Other financing sources (uses)				
Capital leases	3,945,569	259,770	6,914,598	1,019,287
Refunded capital leases	9,710,001	-	-	-
Refunding bonds Issued	46,939,230	68,940,000	11,820,000	22,970,000
Payments for refunded capital leases	(5,959,017)	(2,881,410)	-	-
Bonds issued	-	36,000,000	55,000,000	66,000,000
Debt premiums	-	6,925,688	1,112,967	6,792,039
Payments to refunded bonds escrow agent	(46,707,069)	(74,464,866)	(12,011,244)	(25,147,135)
Transfers in	19,020,755	20,201,851	24,167,589	26,057,411
Transfers out	(20,549,591)	(21,955,384)	(27,904,837)	(28,405,165)
Total other financing sources (uses)	6,399,878	33,025,649	59,099,073	69,286,437
Net change in fund balances	\$ (35,555,307)	\$ (8,890,433)	\$ 32,573,358	\$ 67,624,140
Debt service as a percentage of non-capital expenditures	10.20%	9.70%	10.01%	9.69%

Source: Washoe County School District Business Office

Table 1.4

	2006	2007	2008	2009	2010	2011
\$	332,242,387	\$ 345,206,688	\$ 357,047,961	\$ 325,570,132	\$ 324,664,593	\$ 318,889,279
	130,050,648	163,589,108	186,229,991	210,879,096	215,449,306	203,695,579
	31,975,138	32,223,794	34,469,253	56,883,485	45,264,459	53,123,315
	37,224	32,032	281,635	245,070	28,533	50,630
	494,305,397	541,051,622	578,028,840	593,577,783	585,406,891	575,758,803
	219,930,930	239,765,677	251,866,060	257,809,827	218,542,060	203,716,213
	40,502,495	43,980,533	46,753,582	51,831,651	68,224,241	67,145,848
	8,006,895	6,925,974	7,103,556	7,501,464	8,418,594	8,320,821
	3,199,927	3,917,914	3,839,555	4,408,490	52,361,058	64,073,815
	1,080,063	1,268,709	1,168,060	1,098,957	1,651,604	1,990,893
	-	-	-	-	-	-
	642,275	854,566	940,823	938,856	884,001	766,830
	-	-	-	-	3,532,363	3,501,320
	-	-	-	-	303,553	346,751
	27,771,224	28,350,002	32,776,708	35,069,594	25,923,410	25,209,150
	18,305,324	21,286,332	24,379,737	24,911,810	12,169,686	12,277,373
	7,208,768	8,248,281	9,757,193	10,223,323	5,737,648	5,316,382
	24,818,064	26,307,853	30,212,368	31,600,900	31,584,124	30,116,636
	14,336,042	16,130,137	16,685,962	18,384,237	24,726,262	21,679,439
	41,985,686	45,666,518	47,596,337	50,598,979	48,859,813	46,267,691
	16,801,178	19,067,657	23,660,180	20,516,229	14,908,326	16,484,167
	16,851	217,113	238,840	315,279	-	-
	-	-	275,219	229,920	414,448	394,001
	2,793,185	6,964,292	3,525,626	10,358,602	11,666,683	6,480,102
	84,238,853	21,753,919	39,965,163	73,219,024	37,999,224	34,688,316
	26,553,319	29,302,637	32,277,384	32,747,389	43,609,116	47,411,206
	20,881,655	20,276,179	22,752,490	24,035,406	25,444,338	24,351,047
	1,710,989	511,796	351,480	629,331	455,566	540,294
	12,325	14,900	14,351	11,698	142,169	2,078,371
	560,796,048	540,810,989	596,140,674	656,440,966	637,558,287	623,156,666
	(66,490,651)	240,633	(18,111,834)	(62,863,183)	(52,151,396)	(47,397,863)
	1,005,000	1,705,000	3,398,000	-	870,000	2,192,000
	-	-	-	-	-	-
	29,820,000	66,585,000	-	-	13,700,000	41,515,000
	-	-	-	-	-	-
	30,000,000	65,000,000	55,000,000	45,000,000	50,995,000	5,815,000
	402,898	184,417	701,953	338,162	1,022,133	4,954,986
	(28,475,000)	(67,010,175)	-	-	(14,570,000)	(46,104,110)
	30,256,343	38,571,267	33,207,173	38,580,485	35,608,717	39,489,238
	(32,154,842)	(40,442,193)	(35,503,785)	(40,288,250)	(37,352,531)	(41,115,462)
	30,854,399	64,593,316	56,803,341	43,630,397	50,273,319	6,746,652
\$	(35,636,252)	64,833,949	38,691,507	(19,232,786)	(1,878,077)	(40,651,211)
	9.95%	9.55%	9.89%	9.74%	11.52%	12.19%

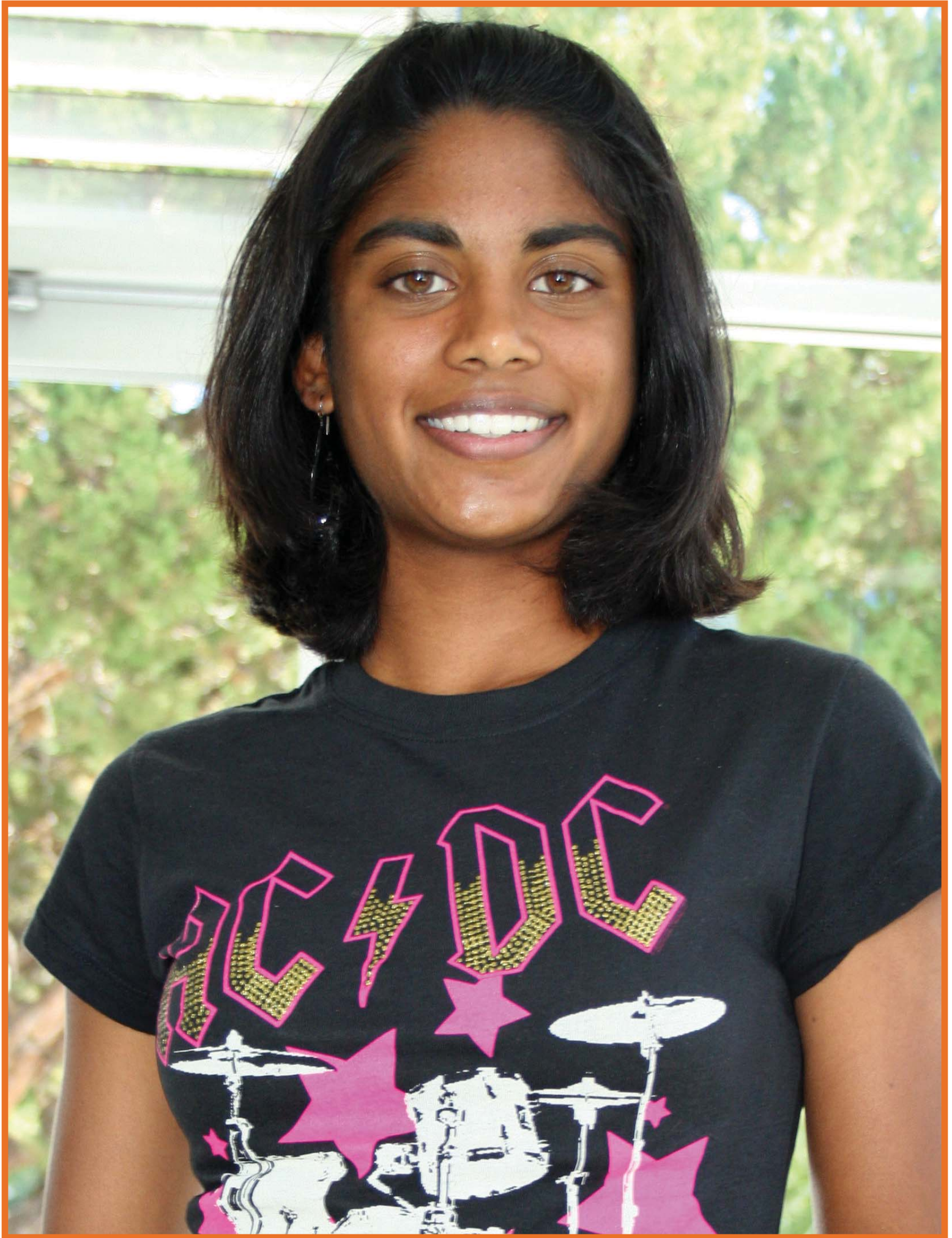
**Washoe County School District
Major Governmental Revenues By Source
Last Ten Fiscal Years
(modified accrual basis of accounting)**

Fiscal Year Ended June 30,	General Fund State Distributive School Fund	General Fund Ad Valorem Taxes	General Fund Franchise Tax	General Fund Government Services Tax	General Fund Local School Support Tax (Sales Tax)
2002	\$ 75,088,119	\$ 67,239,288	\$ 230,353	\$ 10,338,568	\$ 112,258,067
2003	78,721,232	72,277,614	233,187	11,303,671	116,959,363
2004	87,154,547	77,268,419	205,259	12,563,725	128,565,040
2005	85,542,351	82,793,542	286,955	13,709,075	145,056,434
2006	77,280,007	89,351,473	361,157	14,517,247	161,027,372
2007	92,147,678	98,451,752	305,996	14,834,870	156,893,557
2008	125,171,400	105,044,775	462,145	14,533,686	153,328,703
2009	143,080,662	110,021,656	364,469	13,219,509	120,369,201
2010	156,389,169	109,168,786	332,477	12,163,806	127,099,100
2011	143,954,130	101,306,516	365,707	11,566,263	128,788,689

Source: Washoe County School District Business Office

Table 1.5

<u>General Fund Investment Income</u>	<u>General Fund ARRA State Fiscal Stabilization</u>	<u>Debt Service Fund Ad Valorem Taxes</u>	<u>Capital Projects Fund Government Services Tax</u>	<u>Special Revenue Fund State Distributive School Fund</u>
\$ 778,074	\$ -	\$ 35,327,857	\$ 2,676,923	\$ 13,887,475
439,873	-	37,951,688	2,927,284	14,771,785
369,444	-	40,437,409	3,253,375	15,983,978
1,030,943	-	43,304,316	3,551,635	16,881,687
2,554,914	-	46,760,465	3,759,896	18,655,920
3,360,393	-	51,692,753	3,842,316	19,644,528
3,593,870	-	55,343,712	3,764,216	21,029,346
1,883,405	21,869,831	58,121,673	3,424,061	22,892,682
876,542	-	57,629,191	3,157,443	22,866,600
513,922	-	53,348,510	2,994,034	22,911,657



**Washoe County School District
Washoe County, Nevada
Principal Property Taxpayers
Current Year and Nine Years Ago
(amounts expressed in thousands)**

Table 2.1

Taxpayer	2011			2002		
	Assessed Valuation	Rank	Percent of Total Assessed Valuation	Assessed Valuation	Rank	Percent of Total Assessed Valuation
Peppermill Casinos, Inc.	\$ 106,730	1	0.78%	\$ 56,925	4	0.60%
Prologis NA3 LLC	65,484	2	0.48%	-	-	-
Sparks Legend Development	45,028	3	0.33%	-	-	-
Golden Road Motor, Inc.	41,745	4	0.31%	-	-	-
Circus Circus & El Dorado Joint Venture	41,165	5	0.30%	83,769	2	0.89%
Credit Markets Real Estate Corporation	37,107	6	0.27%	-	-	-
International Game Technology	35,280	7	0.26%	-	-	-
Prologis NA3 NV V LLC	34,889	8	0.25%	-	-	-
Northwestern Mutal Life Insurance	26,151	9	0.19%	-	-	-
Montage Marketing Corporation	24,351	10	0.18%	-	-	-
Sierra Pacific Power Company	-	-	-	140,364	1	1.48%
Nevada Bell	-	-	-	58,223	3	0.61%
Sparks Nugget Inc.	-	-	-	47,784	5	0.50%
Dermody Industrial Park	-	-	-	46,119	6	0.49%
El Dorado Resorts, LLC	-	-	-	43,399	7	0.46%
FHR Corporation	-	-	-	43,291	8	0.46%
Circus Circus Casinos, Inc.	-	-	-	40,305	9	0.43%
Harrah's Club	-	-	-	38,780	10	0.41%
SUBTOTAL	457,930		3.35%	598,959		6.33%
All other taxpayers	13,200,921		96.65%	8,862,074		93.67%
TOTAL ASSESSED VALUATION	\$ 13,658,851		100.00%	\$ 9,461,033		100.00%

Source: Washoe County Comptroller's Office

Washoe County School District
Washoe County, Nevada
Property Tax Rates Direct and Overlapping Governments
Last Ten Fiscal Years
(tax rates per \$100 assessed valuation)

	Fiscal Year Ended June 30,			
	2002	2003	2004	2005
Washoe County				
Operating rate	0.8567	0.9217	0.9167	0.9231
Voter approved				
Child protective services	0.0400	0.0400	0.0400	0.0400
Regional animal services	-	-	0.0300	0.0300
Senior services	0.0100	0.0100	0.0100	0.0100
Library expansion	0.0200	0.0200	0.0200	0.0200
Legislative overrides				
Indigent insurance	0.0150	0.0150	-	0.0150
Indigent health	0.0850	0.0800	0.0900	0.1000
Capital acquisition	0.0500	0.0500	0.0500	0.0500
Youth services	0.0048	0.0070	0.0084	0.0083
Detention center	0.0774	0.0774	0.0774	0.0774
SCCRT loss	-	-	0.0150	-
Family court	0.0192	0.0192	0.0192	0.0192
AB 104 Fair share tax	0.0272	0.0272	0.0272	0.0272
Debt service	0.0652	0.0778	0.0778	0.0715
Total Washoe County direct rate	1.2705	1.3453	1.3817	1.3917
State of Nevada	0.1500	0.1500	0.1700	0.1700
Washoe County School District	1.1385	1.1385	1.1385	1.1385
Total, Washoe County unincorporated area	2.5590	2.6338	2.6902	2.7002
Cities				
City of Reno	0.9556	0.9456	0.9456	0.9456
City of Sparks	0.8653	0.9361	0.9161	0.9161
Fire Districts				
North Lake Tahoe Fire Protection District	0.5068	0.5101	0.5227	0.4746
Sierra Fire Protection District	0.4200	0.4200	0.4200	0.4200
Truckee Meadows Fire Protection District	0.4813	0.4813	0.4813	0.4713
General Improvement Districts				
Gerlach	-	-	-	-
Incline Village	0.0682	0.0695	0.0741	0.0730
Palomino Valley	0.3970	0.3965	0.4230	0.4353
South Truckee Meadows	0.1216	0.1125	0.1007	-
Other Special Districts				
Lemmon Valley Underground Water Basin	-	-	0.0022	0.0020
Sun Valley Water & Sanitation District	0.1084	0.1137	0.1243	0.1329
Truckee Meadows Underground Water	0.0005	0.0005	0.0004	0.0005

Source: Washoe County Comptroller's Office

Table 2.2

2006	2007	2008	2009	2010	2011
0.9231	0.9401	0.9592	0.9629	0.9612	0.9611
0.0400	0.0400	0.0400	0.0400	0.0400	0.0400
0.0300	0.0300	0.0300	0.0300	0.0300	0.0300
0.0100	0.0100	0.0100	0.0100	0.0100	0.0100
0.0200	0.0200	0.0200	0.0200	0.0200	0.0200
0.0150	0.0150	0.0150	0.0150	0.0150	0.0150
0.1000	0.0950	0.0800	0.0800	0.0800	0.0750
0.0500	0.0500	0.0500	0.0500	0.0500	0.0500
0.0083	0.0077	0.0077	0.0077	0.0077	0.0088
0.0774	0.0774	0.0774	0.0774	0.0774	0.0774
-	-	-	-	-	-
0.0192	0.0192	0.0192	0.0192	0.0192	0.0192
0.0272	0.0272	0.0272	0.0272	0.0272	0.0272
0.0715	0.0601	0.0560	0.0523	0.0540	0.0580
1.3917	1.3917	1.3917	1.3917	1.3917	1.3917
0.1700	0.1700	0.1700	0.1700	0.1700	0.1700
1.1385	1.1385	1.1385	1.1385	1.1385	1.1385
2.7002	2.7002	2.7002	2.7002	2.7002	2.7002
0.9456	0.9456	0.9456	0.9456	0.9456	0.9456
0.9161	0.9161	0.9161	0.9161	0.9161	0.9161
0.5118	0.5070	0.5142	0.5226	0.5275	0.5389
0.4200	0.4200	0.4200	0.5200	0.5200	0.5200
0.4713	0.4713	0.4713	0.4713	0.4713	0.4713
-	-	-	-	0.2550	0.2500
0.0702	0.0687	0.0711	0.0741	0.0755	0.0806
0.4168	0.4270	0.4270	0.4885	0.4885	0.4885
-	-	-	-	-	-
0.0019	0.0017	0.0012	-	-	-
0.1329	0.1329	0.1329	0.1329	0.1457	0.1736
0.0005	0.0004	0.0004	0.0005	0.0040	0.0005

**Washoe County School District
Washoe County, Nevada
Assessed and Estimated Actual Value of Taxable Property
Last Ten Fiscal Years
(amounts expressed in thousands)**

Fiscal Year Ended June 30,	Real Property Assessed Property				Personal Property Assessed Value
	Residential	Commercial	Industrial	Other	
2002	5,779,329	2,266,553	716,567	930,450	598,262
2003	6,097,744	1,995,268	690,536	1,130,859	897,928
2004	6,914,968	2,146,658	734,470	1,411,793	632,546
2005	7,359,180	2,401,256	760,477	1,361,320	635,384
2006	8,112,575	2,629,471	805,595	1,490,866	596,491
2007	9,503,764	2,898,745	900,363	1,600,955	703,276
2008	10,767,225	3,317,724	973,242	1,885,497	691,628
2009	12,389,860	3,598,911	1,096,143	2,430,308	738,274
2010	10,680,846	3,779,799	1,092,343	1,475,332	748,403
2011	9,426,219	3,489,578	1,022,668	1,584,556	636,184

Source: Washoe County Comptroller's Office

Table 2.3

Total				
Less: Exempt Property	Taxable Assessed Value	Estimated Actual Assessed Value	Assessed Value To Taxable Value	Total Direct Tax Rate
1,194,463	9,096,698	25,990,566	35.00%	1.2705
1,350,371	9,461,964	27,034,183	35.00%	1.3453
1,431,598	10,408,837	29,739,534	35.00%	1.3817
1,501,359	11,016,258	31,475,023	35.00%	1.3917
1,655,650	11,979,348	34,226,709	35.00%	1.3917
1,861,784	13,745,319	39,272,340	35.00%	1.3917
2,529,824	15,105,492	43,158,549	35.00%	1.3917
3,046,485	17,207,011	49,162,889	35.00%	1.3917
2,677,247	15,099,476	43,141,360	35.00%	1.3917
2,500,354	13,658,851	39,025,289	35.00%	1.3917

**Washoe County School District
Washoe County, Nevada
Property Tax Levies and Collections
Last Ten Fiscal Years
(dollars expressed in thousands)**

Table 2.4

Fiscal Year Ended June 30,	Net Secured Roll Tax Levy	Current Tax Collections	Percent of Levy Collected	Delinquent Tax Collections	Total Tax Collections	Total Collections As Percent of Current Levy	Outstanding Delinquent Taxes	Outstanding Delinquent Taxes As Percent of Current Levy
2002	291,603	288,340	98.88%	3,223	291,563	99.99%	40	0.01%
2003	320,081	316,661	98.93%	3,384	320,045	99.99%	36	0.01%
2004	348,064	345,198	99.18%	2,820	348,018	99.99%	46	0.01%
2005	372,702	370,001	99.27%	2,657	372,658	99.99%	44	0.01%
2006	404,224	401,305	99.28%	2,872	404,177	99.99%	47	0.01%
2007	446,362	442,446	99.12%	3,806	446,252	99.98%	110	0.02%
2008	480,945	472,860	98.32%	7,691	480,551	99.92%	394	0.08%
2009	514,531	504,268	98.01%	8,882	513,150	99.73%	1,381	0.27%
2010	504,823	495,281	98.11%	5,966	501,247	99.29%	3,576	0.71%
2011	458,717	451,994	98.53%	-	451,994	98.53%	-	0.00%

Source: Washoe County Comptroller's Office

Washoe County School District
Washoe County, Nevada
Taxable Sales
Last Ten Fiscal Years
(dollars expressed in thousands)

Table 2.5

Fiscal Year Ended June 30,	Taxable Sales	Percent Change	Local School Support Tax Rate
2002	5,280,706	1.7%	2.25%
2003	5,475,602	3.7%	2.25%
2004	6,003,368	9.6%	2.25%
2005	6,660,263	10.9%	2.25%
2006	7,245,525	8.8%	2.25%
2007	7,202,641	-0.6%	2.25%
2008	6,823,701	-5.3%	2.25%
2009	5,707,791	-16.4%	2.25%
2010	5,176,982	-9.3%	2.60%
2011	5,282,935	2.0%	2.60%

Source: State of Nevada Department of Taxation



**Washoe County School District
Ratios of Outstanding Debt by Type
Last Ten Fiscal Years**

Table 3.1

Fiscal Year Ended June 30,	General Bonded Debt			Other Governmental Activities Debt			
	General Obligation Bonds	Percentage of Actual Property Value (a)	Per Capita (b)	Capital Lease Obligations	Total Primary Government	Percentage of Personal Income (b)	Per Capita (b)
2002	355,985,000	3.91%	983.82	21,150,750	377,135,750	2.84%	1,042.27
2003	352,425,000	3.72%	949.34	17,429,798	369,854,798	2.66%	996.29
2004	385,090,000	3.70%	1,009.74	23,131,681	408,221,681	2.63%	1,070.39
2005	427,205,000	3.88%	1,092.98	22,255,576	449,460,576	2.69%	1,149.92
2006	433,985,000	3.62%	1,089.77	21,272,256	455,257,256	2.60%	1,143.18
2007	474,945,000	3.46%	1,168.85	20,709,619	495,654,619	2.70%	1,219.82
2008	500,380,000	3.31%	1,213.87	21,395,235	521,775,235	2.69%	1,265.77
2009	515,520,000	3.00%	1,242.76	18,507,845	534,027,845	2.88%	1,287.37
2010	524,700,000	3.47%	1,245.11	16,713,729	541,413,729	3.11%	1,284.78
2011	482,900,000	3.54%	1,126.34	16,209,523	499,109,523	2.78%	1,164.14

Source: Washoe County School District Business Office

Source Information for this report

Washoe County School District

(a) See Schedule 2.3 for taxable property value

(b) See Schedule 4.1 for population and personal income data

**Washoe County School District
Legal Debt Margin Information
Last Ten Fiscal Years**

Table 3.2

Fiscal Year Ended June 30,	Debt Limit for School Districts	Total Net Debt Applicable to Limit	Legal Debt Margin	Total Net Debt Applicable to the Limit as a Percentage of Debt Limit
2002	1,419,154,875	335,985,000	1,083,169,875	23.68%
2003	1,561,438,114	352,425,000	1,209,013,114	22.57%
2004	1,652,438,739	385,155,000	1,267,283,739	23.31%
2005	1,732,291,780	427,205,000	1,305,086,780	24.66%
2006	1,900,908,705	433,985,000	1,466,923,705	22.83%
2007	2,265,823,871	474,945,000	1,790,878,871	20.96%
2008	2,581,051,586	500,380,000	2,080,671,586	19.39%
2009	2,659,385,485	515,520,000	2,143,865,485	19.38%
2010	2,335,848,390	528,719,733	1,807,128,657	22.64%
2011	2,096,403,009	478,325,526	1,618,077,483	22.82%

Legal debt margin calculation for fiscal year ended June 30, 2011

Current assessed valuation for 2011/2012 tax year	\$ 13,658,850,921
Redevelopment agencies	317,169,140
Total assessed value	<u>13,976,020,061</u>
General obligation debt limit (15%)	2,096,403,009
Outstanding general obligation debt	478,325,526
Legal debt margin	<u><u>\$ 1,618,077,483</u></u>

Note: The statutory debt limit for school districts in the State of Nevada is 15% of the assessed value of all taxable property in the county as set forth in Chapter 387.400 of the Nevada Revised Statutes.

Source: Washoe County School District Business Office, JNA Consulting

Washoe County School District
Washoe County, Nevada
General Obligation Direct and Overlapping Debt
As of June 30, 2011
(amounts expressed in thousands)

Table 3.3

	<u>General Obligation Debt Outstanding</u>	<u>Present Self-Supporting General Obligation Debt</u>	<u>Percent Applicable To Washoe County</u>	<u>Applicable Net Debt</u>
Direct debt				
Washoe County School District	\$ 482,900	\$ -	100%	\$ 482,900
Overlapping				
Washoe County-Governmental Activity Bonds	134,329	-	100%	134,329
Washoe County-Special Assessment Bonds	2,652	2,652	100%	-
Reno/Sparks Convention Visitor's Authority	127,195	127,195	100%	-
City of Reno	51,440	-	100%	51,440
City of Reno-supported by specific revenues	338,385	338,385	100%	-
Reno-Special Assessment Bonds	20,617	20,617	100%	-
City of Sparks	5,610	-	100%	5,610
Sparks-Sewer/Utility Bonds	55,741	55,741	100%	-
Incline Village General Improvement District	18,646	18,646	100%	-
State of Nevada	<u>2,167,665</u>	<u>650,645</u>	14.74%	<u>223,609</u>
Total overlapping debt	<u>2,922,280</u>	<u>1,213,881</u>		<u>414,988</u>
Total direct and overlapping debt	<u>\$ 3,405,180</u>	<u>\$ 1,213,881</u>		<u>\$ 897,888</u>

Source: Washoe County Comptroller's Office

¹Special assessment bonds are not general obligations of Washoe County, or of the Cities of Reno and Sparks. If, however, the special assessments collected with all other available resources were insufficient to meet debt service requirements on these bonds, the respective bond ordinances require that the deficiency be made up with the government's general fund.

**Washoe County School District
Washoe County, Nevada
Demographic and Economic Statistics
Last Ten Fiscal Years
(dollars expressed in thousands)**

Fiscal Year Ended June 30,	Population	Per Capita Income	Median Age	School Enrollment*	Total Personal Income	Unemployment Rate
2002	361,841	37	35.6	57,583	13,273,476	4.9%
2003	371,231	37	35.8	58,903	13,900,375	4.6%
2004	381,377	41	35.1	60,408	15,532,986	4.2%
2005	390,863	42	36.1	62,097	16,700,497	4.0%
2006	398,236	43	36.5	62,372	17,510,758	4.0%
2007	406,335	44	34.5	63,025	18,378,021	4.5%
2008	412,219	46	36.5	63,628	19,392,856	6.8%
2009	414,820	45	36.4	63,287	18,550,337	11.6%
2010	421,407	47	37.5	62,455	17,421,365	13.6%
2011	428,735	49	36.4	62,323	17,944,975	12.9%

Source: Washoe County Comptroller's Office
* Washoe County School District

Table 4.1

Total Labor Force	Construction Activity Total Value	Number of New Family Units	Taxable Sales	Gross Income From Gaming	Total Passenger Air Traffic
203,149	294,356	1,324	5,292,179	1,049,152	4,485,369
205,007	305,249	1,217	5,481,583	1,032,988	4,514,225
209,715	345,640	1,009	6,023,437	1,011,658	4,918,829
210,650	368,356	1,113	6,687,447	1,016,864	5,097,170
218,144	307,686	851	7,268,593	1,072,937	5,149,700
220,337	225,085	557	7,202,641	1,069,608	5,014,382
221,785	202,519	240	6,823,701	996,614	4,841,257
224,089	85,407	103	5,707,791	867,198	3,979,015
221,954	55,952	36	5,176,982	788,509	3,777,701
212,480	67,721	55	5,282,935	751,467	3,795,421

**Washoe County School District
Washoe County, Nevada
Principal Employers
Current Year and Nine Years Ago**

Table 4.2

Employer	December, 2010			December, 2001		
	Employees	Rank	Percent of Total County Employment	Employees	Rank	Percent of Total County Employment
Washoe County School District	7500-7999	1	4.22%	6000-6499	1	3.23%
University of Nevada, Reno	4500-4999	2	2.58%	3000-3499	3	1.68%
Washoe County	2500-2999	3	1.50%	2500-2999	5	1.42%
Renown Medical Center	2000-2499	4	1.22%	2500-2999	6	1.42%
Peppermill Hotel Casino - Reno	2000-2499	5	1.22%	4000-4499	2	2.20%
International Game Technology	2000-2499	6	1.22%	2500-2999	7	1.42%
Silver Legacy Resort Casino	1500-1999	7	0.95%	2500-2999	8	1.42%
Atlantis Casino Resort	1500-1999	8	0.95%	-	-	-
Grand Sierra Resort & Casino	1500-1999	9	0.95%	-	-	-
St. Mary's Hospital	1500-1999	10	0.95%	-	-	-
Reno Hilton	-	-	-	2500-2999	4	1.42%
Sparks Nugget, Inc.	-	-	-	2000-2499	9	1.16%
Eldorado Hotel & Casino	-	-	-	2000-2499	10	1.16%
Total County covered employment	183,850			193,550		

Source: Washoe County Comptroller's Office for all except Washoe County School District

SPEED
LIMIT
25



**Washoe County School District
Operating Statistics
Last Ten Fiscal Years**

Fiscal Year Ended June 30,	Enrollment	Governmental Funds Operating Expenditures (b)	Cost per Pupil	Percentage Change	Primary Government Expenses(c)	Cost per Pupil
2002	57,583	431,621,044	7,496	-1.41%	383,012,581	6,651
2003	58,903	450,719,331	7,652	2.08%	389,196,315	6,607
2004	60,408	464,720,491	7,693	0.54%	416,910,616	6,902
2005	62,097	481,317,717	7,751	0.75%	444,912,093	7,165
2006	62,372	560,796,048	8,991	16.00%	461,271,112	7,395
2007	63,025	540,810,989	8,581	-4.56%	502,120,005	7,967
2008	63,628	596,140,674	9,369	9.19%	536,663,981	8,434
2009	63,287	656,440,966	10,372	10.71%	563,895,863	8,910
2010	62,445	637,558,287	10,210	-1.56%	567,459,700	9,087
2011	62,323	507,607,330	8,145	-20.23%	571,430,587	9,169

(a) Meals served restated in FY09 (and all prior years) to include breakfast and lunch meals.

(b) Based on expenses reported on governmental funds statement of revenue, expenditures and changes in fund balances net of capital outlays and debt service

(c) Based on expenses reported in the government-side statement of activities(governmental activities only).

Source: Washoe County School District Business Office

Table 5.1

Percentage Change	Districtwide Teaching Staff	Pupil-Teacher Ratio	Number of Students Receiving Free or Reduced Priced Meals	Percentage of Students Receiving Free or Reduced Priced Meals	Total Meals Served (a)
N/A	N/A	N/A	18,902	32.83%	4,997,831
-0.66%	3,477	16.9	21,625	36.71%	5,089,614
4.45%	3,487	17.3	17,338	28.70%	5,277,978
3.81%	3,600	17.3	24,403	39.30%	5,321,863
3.22%	3,653	17.1	21,467	34.42%	5,455,734
7.73%	3,806	16.6	23,218	36.84%	5,684,279
5.87%	3,864	16.5	21,244	33.39%	5,946,951
5.64%	3,765	16.8	22,049	34.84%	5,995,436
1.99%	3,580	17.4	27,346	43.79%	6,076,114
0.90%	3,360	18.5	26,573	42.64%	6,056,079

**Washoe County School District
Teacher Salary Schedules
Last Ten Fiscal Years**

Table 5.2

Fiscal Year Ended June 30,	Minimum Salary	Maximum salary
2002	\$ 24,675	\$ 53,462
2003	25,292	54,799
2004	25,924	56,169
2005	26,508	57,435
2006	27,303	59,158
2007	29,588	63,959
2008	30,069	66,487
2009	32,820	70,697
2010	32,656	70,344
2011	32,656	70,344

Source: Washoe County School District Human Resources



**Washoe County School District
Full Time Equivalent Employees by Function
Last Ten Years**

Function	Fiscal Year Ended June 30,			
	<u>2002</u>	<u>2003</u>	<u>2004</u>	<u>2005</u>
Instruction	3,805	3,885	3,842	3,968
Student support	249	237	255	300
Instructional staff support	252	246	226	205
General administration	45	44	40	44
School administration	339	331	346	367
Central services	165	158	158	181
Operation and maintenance	481	478	489	495
Student transportation	410	392	318	330
Other support	1	1	2	1
Nutrition services operations	330	252	252	231
Community services operations	14	14	15	13
Land & building acquisition, improvement	7	8	5	6
Total full time equivalent employees	<u><u>6,098</u></u>	<u><u>6,046</u></u>	<u><u>5,948</u></u>	<u><u>6,141</u></u>

Note: Full time equivalent employees do not include substitutes, student activity workers, athletic coaches, or temporary employees.

Source: Washoe County School District Business Office

Table 5.3

2006	2007	2008	2009	2010	2011
4,070	4,161	4,149	4,260	3,936	3,557
305	303	327	423	498	455
224	240	263	279	313	295
46	47	57	60	63	81
383	390	403	371	370	366
197	185	192	198	198	196
494	534	562	532	522	492
321	338	371	337	317	312
-	1	2	-	-	-
233	253	249	211	231	229
12	16	14	17	19	21
13	17	15	17	17	17
<u>6,298</u>	<u>6,485</u>	<u>6,604</u>	<u>6,705</u>	<u>6,484</u>	<u>6,021</u>

**Washoe County School District
Capital Asset Information
Last Ten Fiscal Years**

	Fiscal Year Ended June 30,			
	2002	2003	2004	2005
Elementary Schools				
Sites	60	62	62	62
Square feet	2,509,069	2,619,151	2,656,829	2,661,149
Base capacity	28,441	28,441	29,761	30,080
Middle Schools				
Sites	11	11	11	12
Square feet	1,000,800	1,003,680	1,005,120	1,128,911
Base capacity	8,300	8,300	8,300	8,300
High Schools				
Sites	13	13	13	14
Square feet	2,251,855	2,266,868	2,506,623	2,508,063
Base capacity	11,656	15,236	15,236	16,244
Administrative				
Sites	9	9	9	9
Square feet	88,701	88,701	88,701	88,701
Transportation				
Sites	3	3	3	3
Square feet	60,645	60,645	60,645	60,645
Buses	288	288	299	254
Nutrition				
Sites	1	1	1	1
Square feet	24,246	24,246	24,246	24,246
Other (Bullis Curriculum & Instruction Center, Edison Curriculum & Instruction Center and Plant Facilities)				
Sites	3	3	3	3
Square feet	162,275	163,715	163,715	163,715

* Johnson Elementary, located at Gerlach HS, square footage tracking separated from HS in 2007-08

** Opportunity School & Academy of Arts, Careers & Technology, square footage tracking separated from Other in 2007-08

^ Includes Picollo which is a K-12 school

Source: Washoe County School District Plant Facilities

Table 5.4

2006	2007	2008	2009	2010	2011
62	64	65 *	64	64	64
2,664,029	2,822,459	2,813,816	2,845,877	2,854,743	2,854,461
30,080	31,286	31,286	32,105	32,105	31,179
12	13	13	13	14	14
1,128,911	1,266,428	1,258,676	1,259,306	1,453,875	1,445,669
9,233	10,279	10,279	11,544	12,954	12,544
14	14	16 **	15	15	15
2,518,197	2,574,892	2,754,294	2,565,478	2,635,603	2,635,603
16,244	16,244	16,244	20,016	20,016	20,175
9	9	8	8	8	8
88,701	88,701	91,981	90,572	97,095	106,816
3	3	3	3	3	3
60,645	60,645	60,645	48,020	48,020	48,020
279	293	300	300	301	321
1	1	1	1	1	1
24,246	28,746	28,746	26,997	26,997	26,997
3	3	3 **	3	3	3
163,715	163,715	130,045	132,854	127,451	127,451

